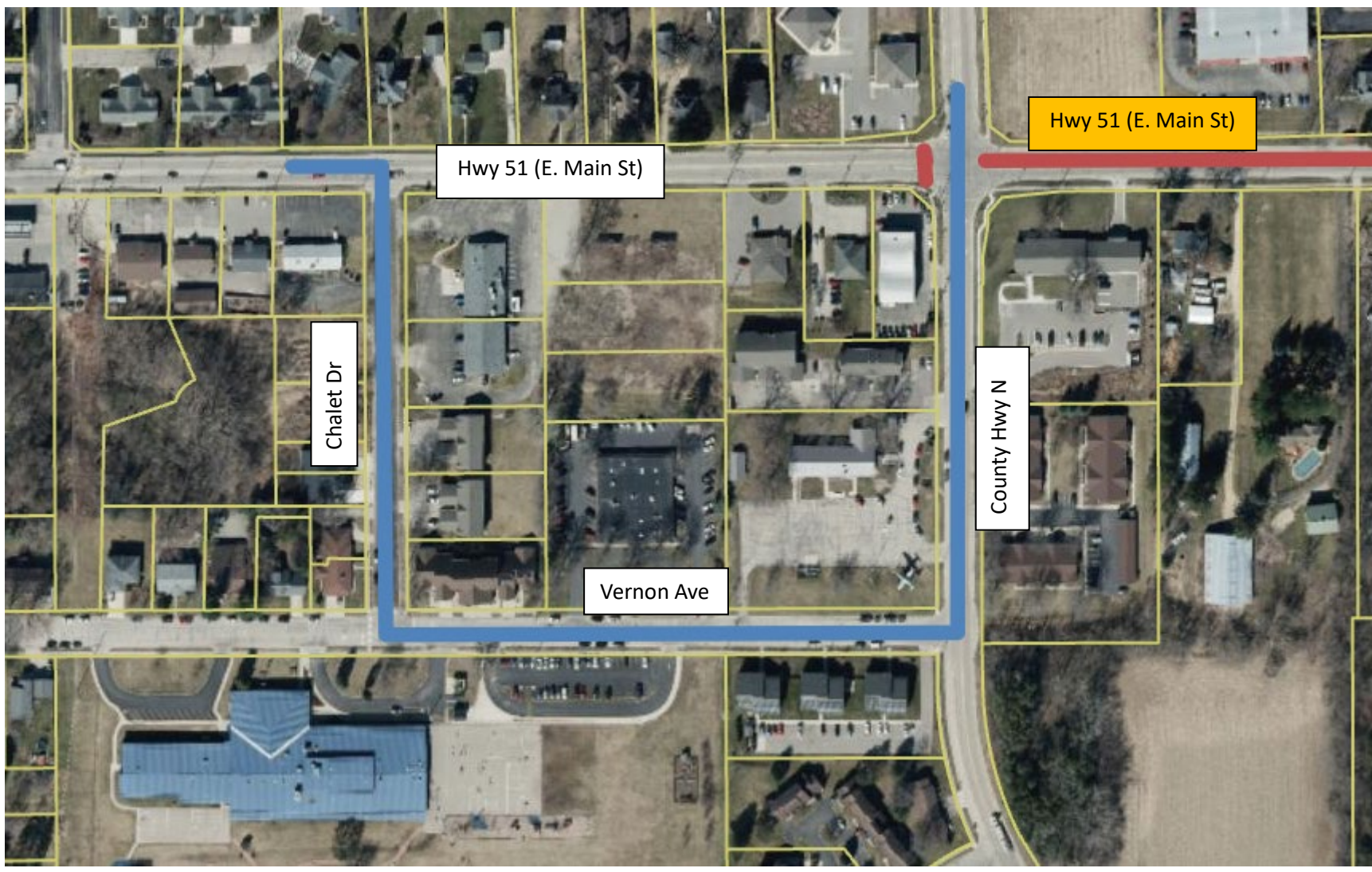


Phase 1 Detour Plan

E. Main Closure – Spring Rd to through County Hwy N
Downtown and Hospital Detour Route



PHASE 2

E. Main Closure – County Hwy N to Church St

Hospital Detour Route



Notes:

- Detour Route for Hospital (Marked in Blue Above)
- Phase 2 – June through August
- Path for emergency service vehicles through construction must be maintained by contractor
- High priority sites
 - Stoughton Health
 - Skaalen Retirement Services
 - Morris St
 - Amundson Parkway

PHASE 3

E. Main Closure – Church St to Fifth St
Hospital Detour Route



Notes:

- Detour Route for Hospital (Marked in Blue Above)
- Phase 3 – Late August to November
- Path for emergency service vehicles through construction must be maintained by contractor