



Vertical
2nd Floor
ORG Closet

Match Line
Area "A"
Area "B"

Area "A"
Area "B"
Match Line

OR #4
BSM
6732-TP

OR #3
BSM
6732-TP

#1
BSM
6332-TP
#2
BSM
6332-TP
#3
BSM
6332-TP
#4
BSM
6332-TP
#5
BSM
6332-TP on
Rollstand

OR #2
BSM
6732-TP

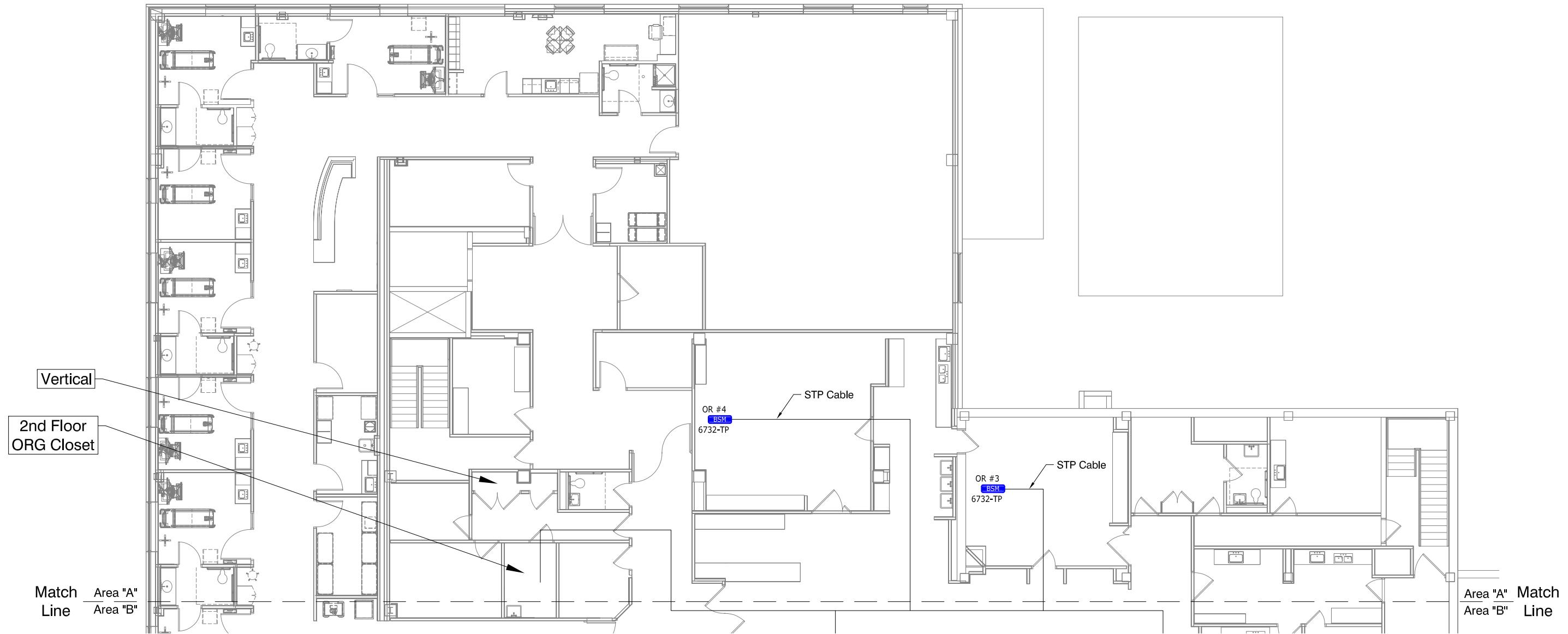
ENDO
BSM
6532-TP

Note: Any changes or modifications to this design must be approved in writing by the NIHON KOHDEN AMERICA Technical Department.

Designed By: David Hopkins
Date: 11/12/15
Revisions:
1.
2.
3.

2nd Floor
Entire Floor

Hardwire



Note: Any changes or modifications to this design must be approved in writing by the Nihon Kohden America Technical Department.

Designed By: David Hopkins
 Date: 11/12/15

Revisions:

1.
2.
3.

2nd Floor
 Area "A"

Hardwire

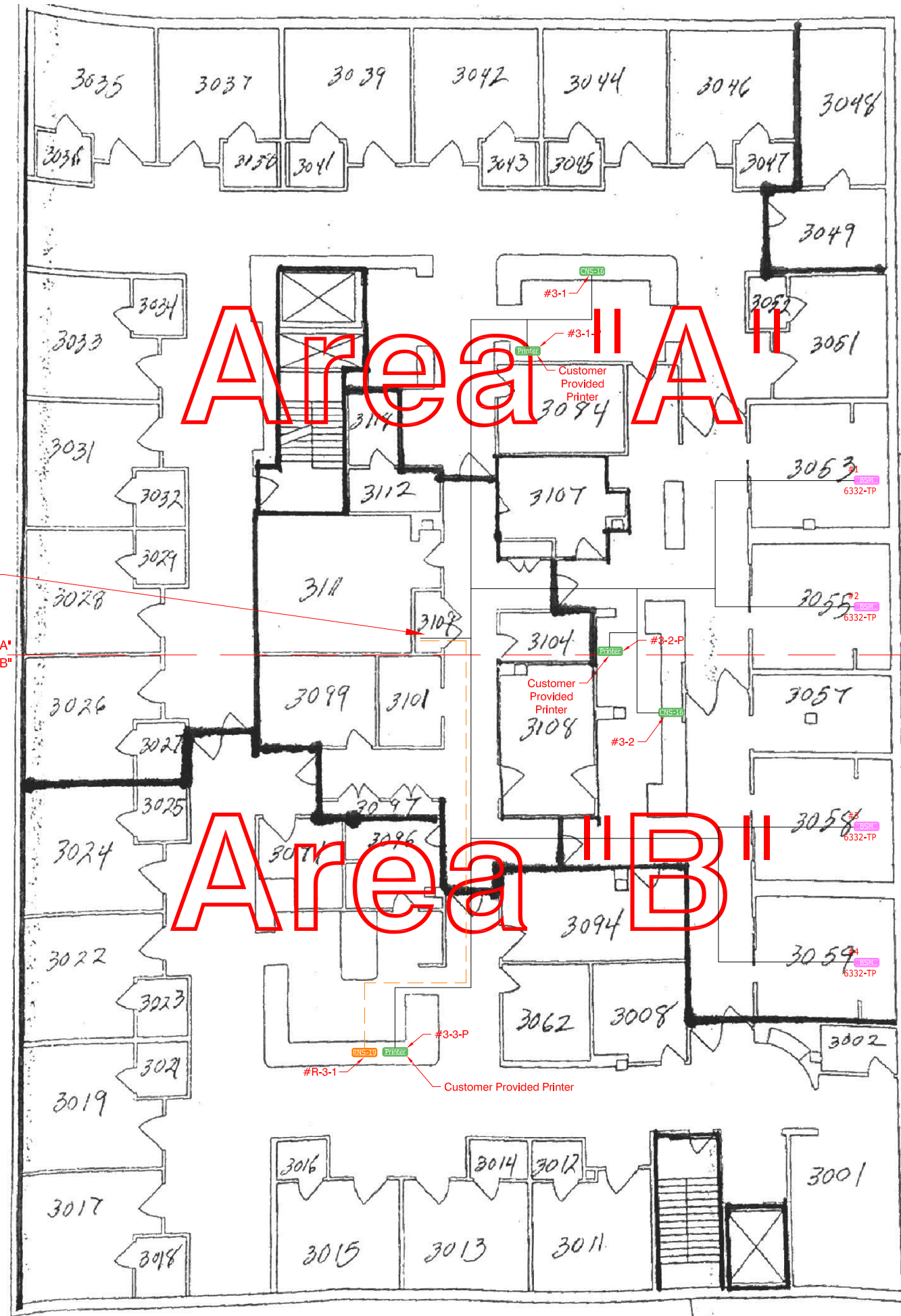


Note: Any changes or modifications to this design must be approved in writing by the Nihon Kohden America Technical Department.

Designed By: David Hopkins
Date: 11/12/15
Revisions:
1.
2.
3.

2nd Floor
 Area "B"

Hardwire



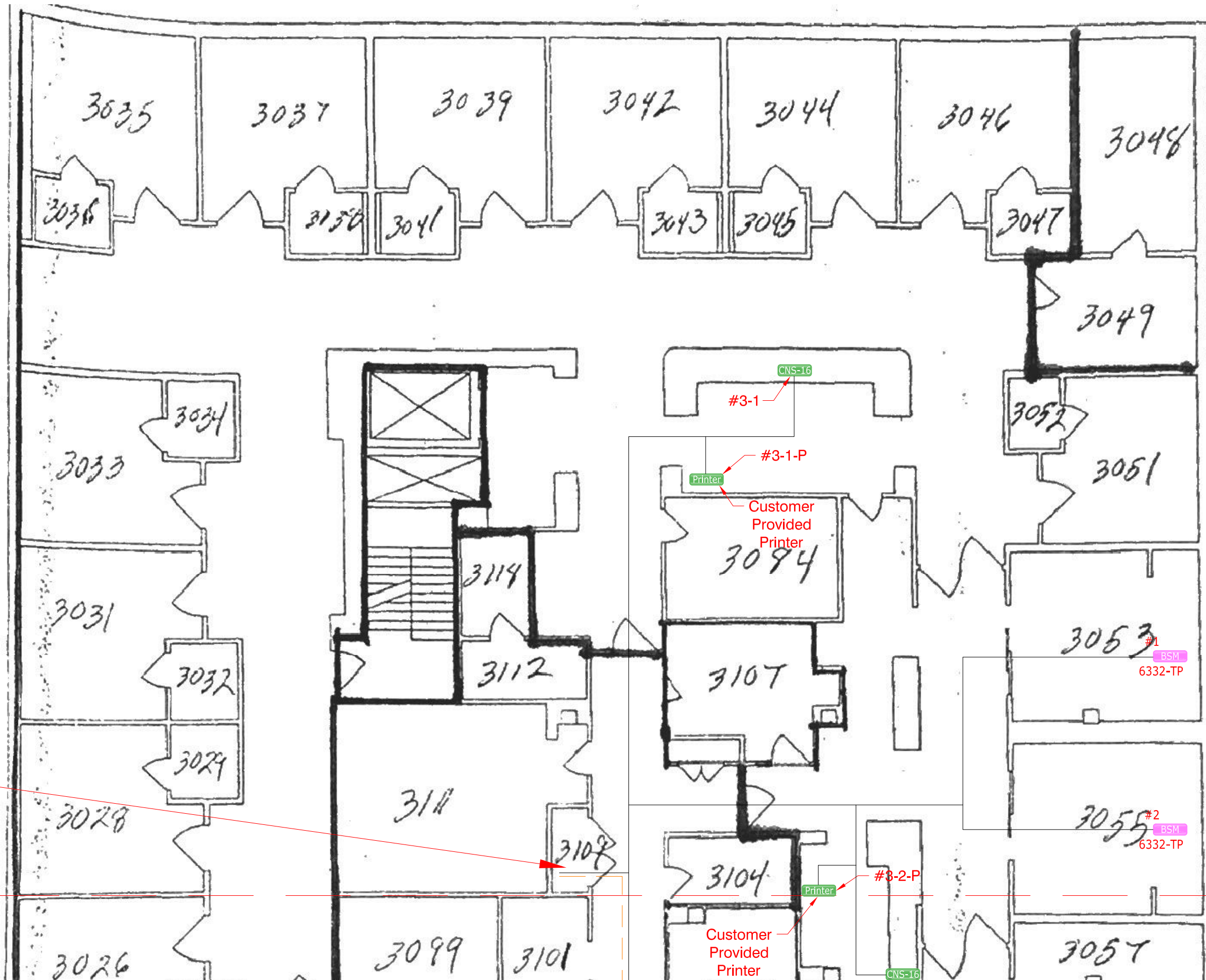
Closet & Vertical
 Match Line Area "A" / Area "B"

Area "A" Match Line / Area "B" Line

Area "A"

Area "B"

Note: Any changes or modifications to this design must be approved in writing by the Nihon Kohden America Technical Department.



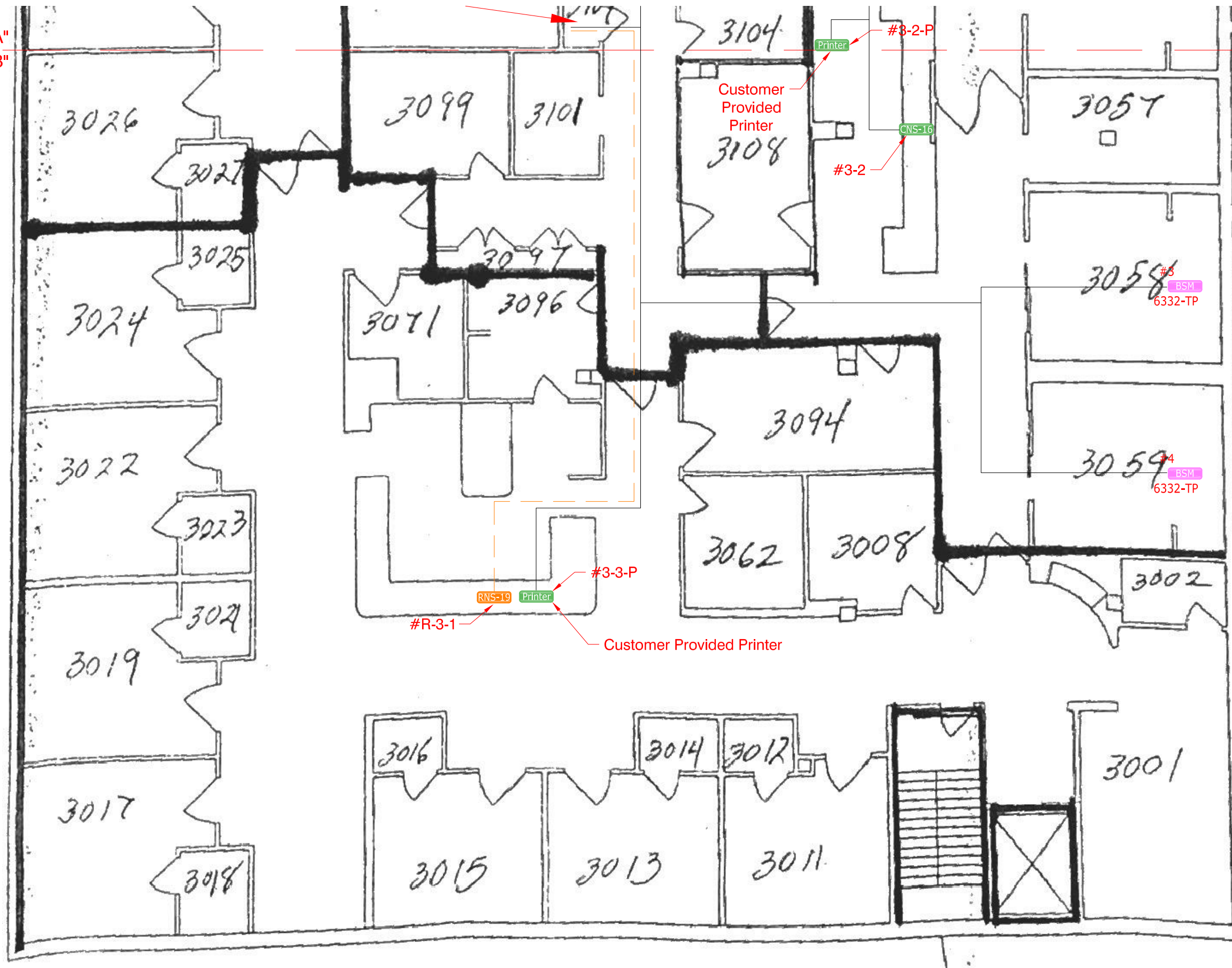
Closet & Vertical

Match Line Area "A" Area "B"

Match Line Area "A" Area "B"

Note: Any changes or modifications to this design must be approved in writing by the Nihon Kohden America Technical Department.

Match Line
Area "A"
Area "B"



Area "A" Match Line
Area "B" Match Line

Note: Any changes or modifications to this design must be approved in writing by the Nihon Kohden America Technical Department.